

## Location of the South West

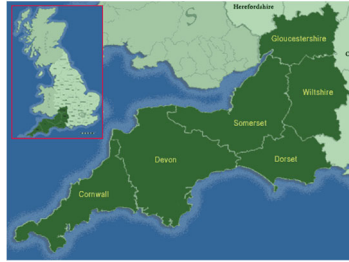
**National** = relating to a country.

**Regional** = an area, especially part of a country.

**Global** = relating to the whole world; worldwide.

**Human features** = built by humans and would not exist in nature without humans.

**Physical features** = created by natural processes and would exist in nature without humans.



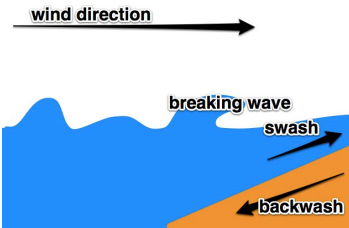
## Waves and tides

**Swash** = the water that rushes up the sand.

**Backwash** = the water rolling back into the sea.

**Fetch** = length of the water the wind blows over.

**Tide** = the alternate rising and falling of the sea



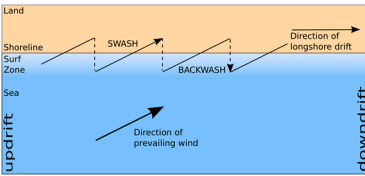
## Processes along the coast

**Erode** = wear away material.

**Longshore drift** = movement of sand parallel to the coast.

**Transport** = carry the eroded material.

**Deposit** = drop the eroded material.



## Erosional landforms

**Headland** = hard rock jutting out into the sea.

**Stack** = tall pillar of rock.

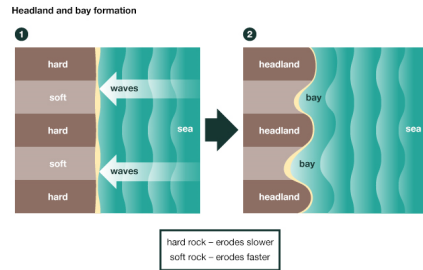
**Stump** = the rock left when a stack erodes and the base is left.

**Arch** = waves erode through the headland leaving an open space.

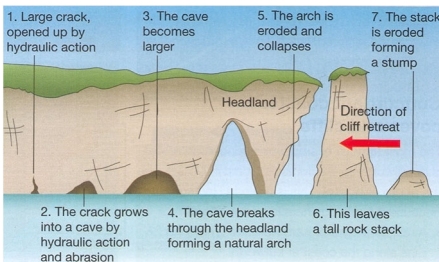
**Bay** = indent in the coastline.

**Wave cut notch** = an indentation at the base of the cliff where the waves erodes it.

**Wave cut platform** = the platform of rock that's left behind as the cliff retreats.



© Encyclopaedia Britannica, Inc.



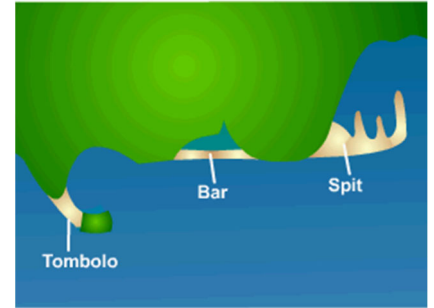
## Depositional landforms

**Spit** = beaches jutting out from the coastline.

**Bar** = a spit which connects two headlands.

**Lagoon** = a stretch of salt water separated from the sea by a low sand-bank.

**Tombolo** = a spit which connects to an offshore island.



## Coastal management

**Hard engineering** = man-made structures built to control the flow of the sea and reduce flooding and erosion.

**Rock armour (rip rap)** = Boulders piled up along the coast.

**Sea wall** = a wall made out of hard material such as concrete which reflects waves back out to sea.

**Groyne** = Wooden or stone fences that are built at right angles to the coast and trap material moved by longshore drift.

**Gabion** = A wall of wire cages filled with rocks built at the foot of a cliff.

**Soft engineering** = schemes set up using knowledge of the sea and its processes to reduce the effects of flooding and erosion.

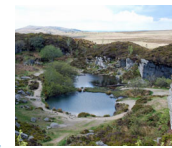
**Beach nourishment** = Sand is artificially moved onto the beach to make it wider.

## Dartmoor

**Tor** = a prominent rock or heap of rocks.

**Quarry** = a place, typically a large, deep pit, from which stone or other materials are or have been extracted.

**Moorland** = upland, open land usually with peaty soil covered with heather and bracken and moss.



Quarry, Haytor



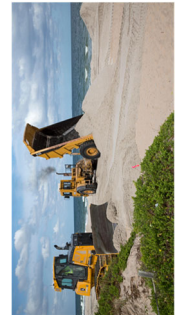
Sea Wall



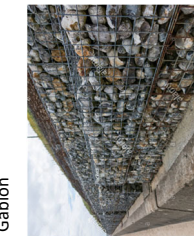
Groynes



Rip Rap



Beach nourishment



Gabion

**Tier 2 vocab**

**Tier 3 vocab**

**Economic** = money, jobs and businesses.

**Environment** = the natural landscape and wildlife.

**Social** = people and their live's.